

MAG-MNT

Mobile towers are available in all shapes and sizes making it difficult to procure a model that best suits your mobile application requirement. At TowerWorx, we understand the “one size fits all” approach does not work well whether it is a commercial or military application. There are several crucial factors that comprise each application when selecting a mobile tower height, foot print the Mobile Networking Tower (MNT) Series platform.

The MNT Series of mobile towers are designed for smaller mobile deployments, such as repeater sites, wireless access points or surveillance monitoring. The MNT tower design is based on the Lattice Series tower; reduced in size and weight making the overall platform smaller and lighter. The standard lifting capacity of the MNT platform is 100 lbs of equipment and cabling with a maximum wind loading of 70 mph. The MNT platform has winch options to support up to a maximum of 250 lbs of equipment mounted on the tower.

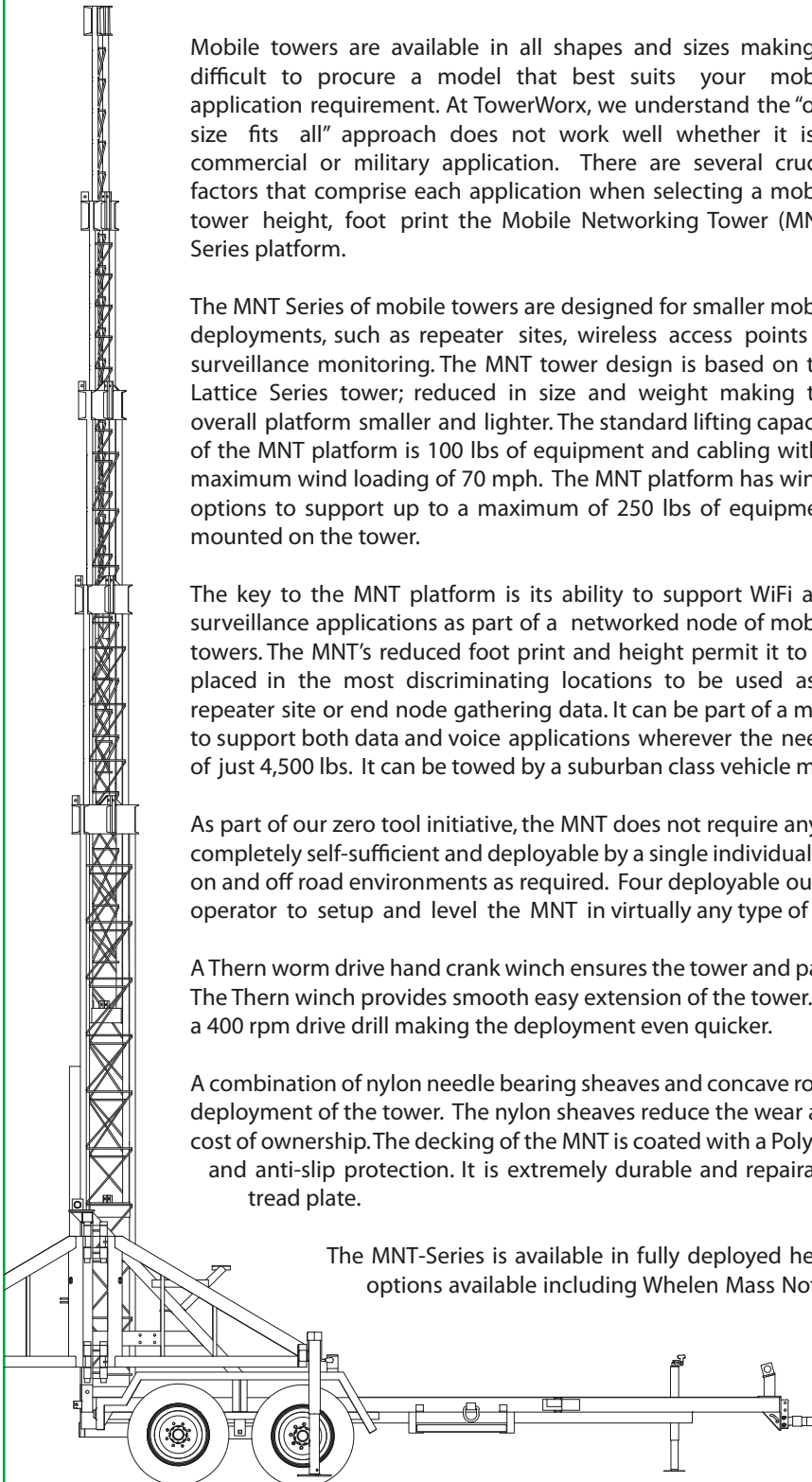
The key to the MNT platform is its ability to support WiFi and surveillance applications as part of a networked node of mobile towers. The MNT's reduced foot print and height permit it to be placed in the most discriminating locations to be used as a repeater site or end node gathering data. It can be part of a more comprehensive network of portable towers used to support both data and voice applications wherever the need may arise. The overall platform has a GVW rating of just 4,500 lbs. It can be towed by a suburban class vehicle making it very portable.

As part of our zero tool initiative, the MNT does not require any hand tools or electrical power to deploy. The unit is completely self-sufficient and deployable by a single individual in less than 60 minutes. The MNT can operate in both on and off road environments as required. Four deployable outriggers extend from the trailer frame permit the operator to setup and level the MNT in virtually any type of environment.

A Thern worm drive hand crank winch ensures the tower and payload remain extended safely for as long as required. The Thern winch provides smooth easy extension of the tower. The winch can be easily outfitted and extended with a 400 rpm drive drill making the deployment even quicker.

A combination of nylon needle bearing sheaves and concave roller wheels produce exceptionally smooth and sturdy deployment of the tower. The nylon sheaves reduce the wear and tear of the wire rope while improving the overall cost of ownership. The decking of the MNT is coated with a Poly Urea by GatorHyde which provides superb corrosion and anti-slip protection. It is extremely durable and repairable making it an excellent alternative to galvanized tread plate.

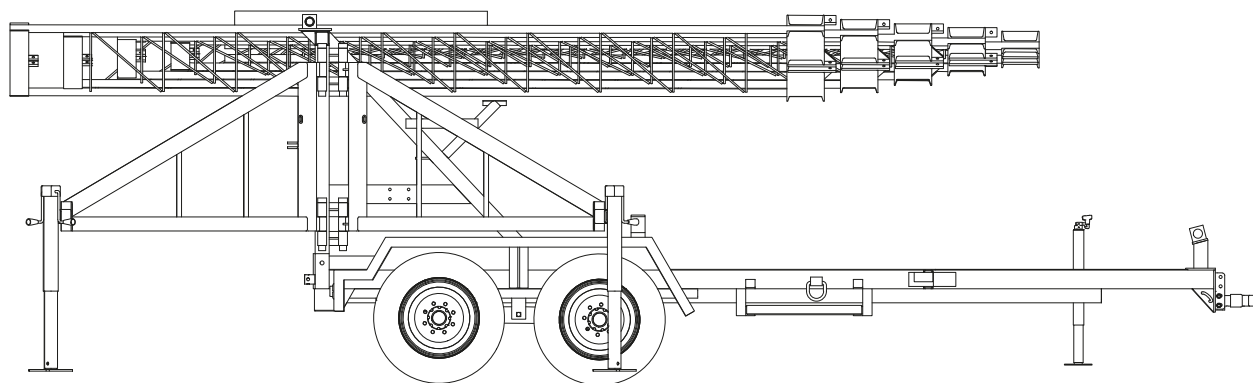
The MNT-Series is available in fully deployed heights of 30', 40' and 60'. There are several packaged options available including Whelen Mass Notification Sirens and area lighting for First Responder applications. For direct sales or a reseller near you, contact TowerWorx:



866-677-5959 or
sales@towerworx.net

MAG-MNT Specifications

Tower Specifications:	MNT-30	MNT-40	MNT-60
Hot-Dipped Galvanized Steel Tower Sections [A53-B-35]	3	4	5
Hand Crank Tilt Winch [2,000 lbs]	1	1	1
Hand Crank Extension Winch [2,000 lbs]	1	1	1
Tower Minimum Operational Height	16' 4"	17' 8"	18' 4"
Tower Maximum Operational Height	30'	40'	60'
Operational Setup Time	60 Minutes	60 Minutes	60 Minutes
Maximum Lifting Capacity	100 lbs	100 lbs	100 lbs
Maximum Rated Wind Speed	70 MPH	70 MPH	70 MPH
3-Point Guy Support	Y	Y	Y
Height from Deck to Bottom of Tower	36"	36"	36"
Thorn Tilt Winch	4WM2	4WM2	4WM2
Thorn Extension Winch	4WM2	4WM2	4WM2
Sheave Type	3.5" Nylon Needle Bearing	3.5" Nylon Needle Bearing	3.5" Nylon Needle Bearing
Wire Rope Size	1/4"	1/4"	1/4"
Extension Rollers	Composite Material	Composite Material	Composite Material
Trailer Specifications:			
Overall Trailer Length	16.5'	16.5'	16.5'
Overall Trailer Width	7' 2"	7' 2"	7' 2"
Overall Tower & Trailer Length - Transportation Mode	22' 3"	22' 3"	22' 3"
Trailer Height - Transportation Mode	6' 8"	6' 8"	6' 8"
Per Axle	2,200 lbs	2,200 lbs	2,200 lbs
Gross Trailer Weight (GVW)	4,500 lbs	4,500 lbs	4,500 lbs
Curb Weight	3,220 lbs	3,420 lbs	3,620 lbs
One Piece Fender Wells	2	2	2
Electric Breaks per Axle	1 Per Axle	1 Per Axle	1 Per Axle
8,000 lbs - Leveling Jacks	4	4	4
Extendable Outriggers	4	4	4
Outrigger Steel Tube Size	3" x 3"	3" x 3"	3" x 3"
DOT - Safety Chains	Y	Y	Y
DOT - Break Away Kit	Y	Y	Y
7-Pin Trailer Electrical Plug	1	1	1
2 5/16" Ball Hitch (Adjustable to Variable Hitch Height)	Y	Y	Y
Maximum Over the Road Travel Speed	55 MPH	55 MPH	55 MPH
Maximum Off Road Travel Speed	15 MPH	15 MPH	15 MPH
Tire Size	ST225/75R15	ST225/75R15	ST225/75R15
Spare Tire	ST225/75R15	ST225/75R15	ST225/75R15
Tail Lights	LED	LED	LED
Deployed Foot Print	16' x 21'	16' x 21'	16' x 21'



All trailers meet Federal & Canadian Highway Lighting Standards (49.CFR571.108)

Wind Loading - The standard tower design includes an engineering calculation (TIA/EIA 222 Rev. G) of a wind load of up to 70 MPH / 112 KPH.